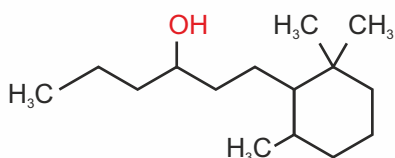


Aquatouch (Timbertouch)

CAS No.

70788-30-6



1-(2,2,6-trimethylcyclohexyl)hexan-3-ol

Odour Family



WOODY
Animal, Amber,
Powerful

NOTE IMPACT

TOP ☐ ☐ ☒
HEART ☐ ☐ ☒
BASE ☐ ☐ ☐



Product Name	Performance	Stability
Fine Fragrance	Excellent	Excellent
Shampoo	Very Good	Good
AP Deo	Poor	Poor
Soap	Very Good	Good
Liquid Detergent	Good	Good
Powder Detergent	Moderate	Moderate
Fabric Conditioner	Good	Moderate
Candles	Good	Good
Acid Cleaner	Not Recommended	Not Recommended
Bleach	Poor	Poor

Olfactory Description

Aquatouch has a powerful dry woody and ambery note.

Chemical Formula

$C_{15}H_{30}O$

Olfactory Territory

Nature

Molecular Weight

226.40

Typical Use Level

Up to 5%

GC Summary

Min-88%
Sum of Isomers

Flash Point

100°C.

LOG P

5.635

Substantivity

600 hours

Vapor Pressure

0.000469 mmHg @ 25.00 °C.

Visual Description

Colourless Viscous Liquid